

VISTA

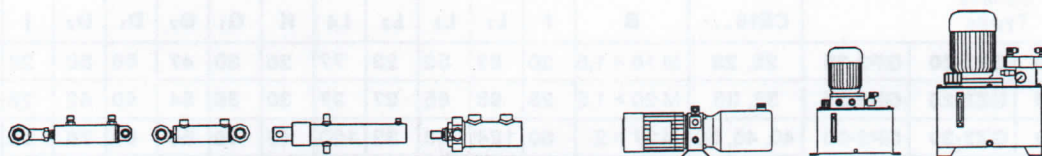
HIDRAVLIKA

VISTA d.o.o.
Kosovelova 14,
4226 ŽIRI, SLO,
tel. 04/50 50 600
fax. 04/51 91 900
e-mail: vista@siol.net
www.vista-hidravlika.si

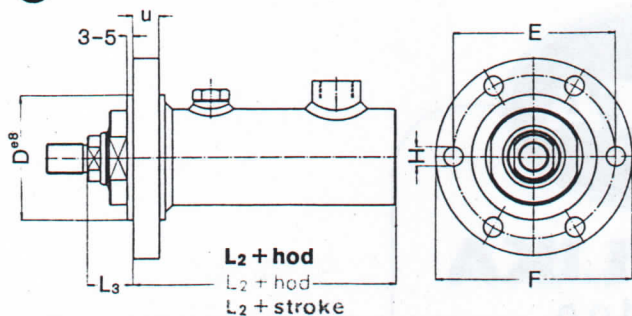
HIDRAVLIČNI CILINDRI

CE 16

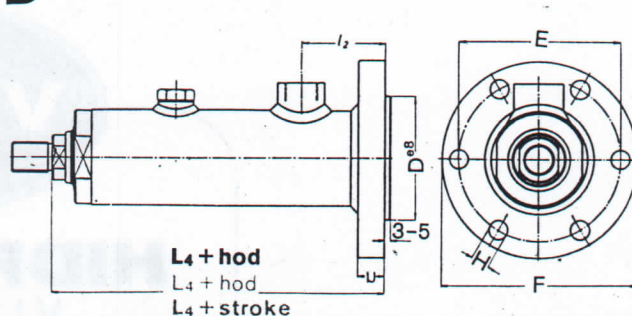
Cilinder enostranski



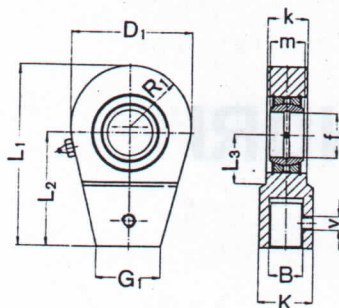
C



D

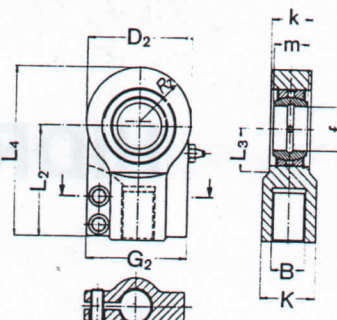


Batnica Klipnjača Piston rod	25	28	32	36	40	45	50	56	63	70	80	90	100	110	125	140	160	200
L ₂	55	60	65	65	78	95	95	111	127	137	151	166	182	193	214	235	256	293
L ₃	25	25	27	27	29	31	31	31	31	31	32	33	36	36	45	45	60	76
L ₄	92	97	108	108	125	142	142	163	179	194	205	220	233	249	274	290	331	399
D	65	65	75	75	90	90	90	115	115	140	140	165	165	225	225	225	285	330
E	85	85	95	95	115	115	115	145	145	170	170	205	205	275	275	275	345	410
F	105	105	119	119	139	139	139	179	179	206	206	246	246	336	336	336	411	492
H	11	11	11	11	13	13	13	17	17	17	17	21	21	30	30	30	33	39
u	14	14	17	17	22	22	22	27	27	32	32	35	35	40	40	40	50	70

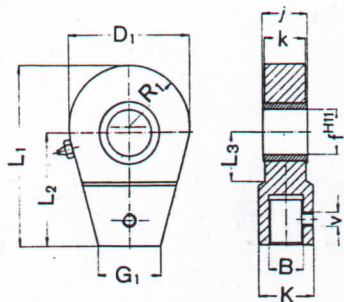


GZ1-

GLAVE Z ZGLOBNIM LEŽAJEM
GLAVE SA ZGLOBNIM LEŽAJEM
PIVOT LUG WITH SPHERICAL
BEARING

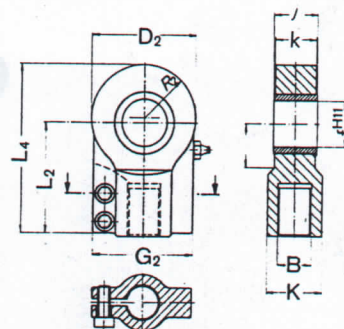


GZ2-



GP1-

GLAVE Z DRNSNO PUŠO
GLAVE SA KLIZNOM ČAUROM
PIVOT LUG



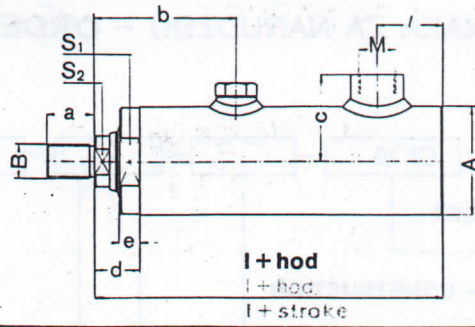
GP2-

Oznaka Oznaka Types				CE16...-	B	f	L ₁	L ₂	L ₃	L ₄	K	G ₁	G ₂	D ₁	D ₂	j	k	m	v
GZ1-20	GP1-20	GZ2-20	GP2-20	25, 28	M 16 × 1,5	20	82	52	22	77	25	30	47	56	50	20	17	16	M 6
GZ1-25	GP1-25	GZ2-25	GP2-25	32, 36	M 20 × 1,5	25	98	65	27	97	30	36	54	60	62	25	21	20	M 6
GZ1-30	GP1-30	GZ2-30	GP2-30	40, 45, 50	M 27 × 2	30	124	80	32	120	40	46	66	80	76	32	27	22	M 6
GZ1-40	GP1-40	GZ2-40	GP2-40	56, 63, 70	M 33 × 2	40	149	97	41	147	50	58	80	94	97	40	32	28	M 8
GZ1-50	GP1-50	-	-	80, 90	M 42 × 2	50	183	120	50	-	60	73	-	116	-	50	40	35	M 10
GZ1-60	GP1-60	-	-	100, 110	M 48 × 2	60	216	140	62	-	70	85	-	140	-	63	52	44	M 10
GZ1-80	GP1-80	-	-	125, 140	M 64 × 3	80	275	180	78	-	90	108	-	176	-	80	66	55	M 16
GZ1-100	GP1-100	-	-	160	M 80 × 3	100	333	210	98	-	110	132	-	238	-	100	84	70	M 20
GZ1-120	GP1-120	-	-	200	M 100 × 3	120	416	260	120	-	135	180	-	290	-	125	102	85	M 20

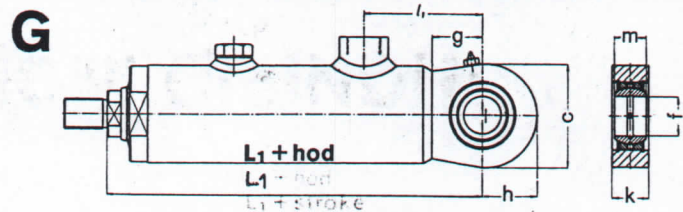
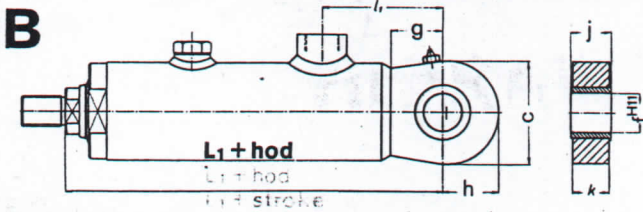
X



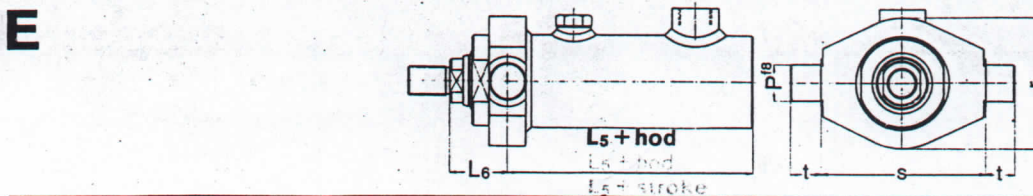
22



Batnica Klipnjača Piston rod	25	28	32	36	40	45	50	56	63	70	80	90	100	110	125	140	160	200
M	M 14 × 1,5				M 16 × 1,5				M 18 × 1,5				M 22 × 1,5				M 27 × 2	
M_{max}	M 18 × 1,5				M 22 × 1,5				M 27 × 2				M 33 × 2				M 42 × 2	
A	48,3	51	60,3	60,3	70	76,1	76,1	88,9	95	101,6	114,3	133	152,4	159	177,8	193,7	219,1	273
B	M 16 × 1,5		M 20 × 1,5		M 27 × 2			M 33 × 2			M 42 × 2		M 48 × 2		M 64 × 3		M 80 × 3	M 100 × 3
L	80	85	92	92	107	126	126	142	158	168	183	199	218	234	259	280	316	369
S₁	41	41	50	50	60	65	65	80	85	90	100	115	135	140	160	175	200	250
S₂	17	17	22	22	30	30	30	36	36	36	46	46	60	60	75	75	90	110
a	22	22	28	28	36	36	36	45	45	45	55	55	62	62	84	84	94	110
b	62	67	73	73	85	102	102	129	132	142	153	163	181	191	210	225	255	301
c	39	41	46	46	51	55	55	62	66	69	76	86	97	101	110	119	133	161
d	22	22	23	23	25	27	27	27	27	27	28	28	31	31	40	40	55	71
e	10	10	10	10	10	10	10	10	10	10	10	10	10	10	15	15	25	30
l	35	35	35	35	42	45	45	46	51	55	56	60	70	75	80	85	90	95



Batnica Klipnjača Piston rod	25	28	32	36	40	45	50	56	63	70	80	90	100	110	125	140	160	200
L₁	110	115	127	127	157	176	176	202	218	228	254	270	299	315	360	381	457	543
C	50	50	60	60	80	80	80	94	94	94	116	116	140	140	178	178	230	290
f	20	20	25	25	30	30	30	40	40	40	50	50	60	60	80	80	100	125
g	28	28	30	30	44	44	44	53	53	53	63	63	72	72	91	91	124	158
h	20	20	33	33	44	44	44	50	50	50	63	63	76	76	96	96	124	156
j	20	20	25	25	32	32	32	40	40	40	50	50	63	63	80	80	100	125
k	17	17	21	21	27	27	27	32	32	32	40	40	52	52	66	66	84	102
l₁	65	65	70	70	92	95	95	106	111	111	127	131	151	156	181	186	231	269
m	16	16	20	20	22	22	22	28	28	28	35	35	44	44	55	55	70	85



Batnica Klipnjača Piston rod	25	28	32	36	40	45	50	56	63	70	80	90	100	110	125	140	160	200
L₅	48	53	56	56	66	83	83	95	111	121	130	146	156	172	179	200	211	236
L₆	32	32	36	36	41	43	43	47	47	47	53	53	62	62	80	80	105	133
P	20	20	25	25	30	30	30	40	40	40	50	50	60	60	80	80	100	120
r	16	16	20	20	100	100	100	125	125	125	150	160	200	200	235	235	295	330
s	90	90	105	105	120	120	120	135	135	135	160	160	195	195	240	240	295	370
t	16	16	20	20	25	25	25	32	32	32	40	40	50	50	63	63	80	100

OZNAKA ZA NAROČILO – OZNAKA ZA NARUDŽBU – ORDER SPECIFICATION

CE16

VRSTA CILINDRA – VRSTA CILINDRA – CYLINDER SERIES

OBLIKA PRITRDITVE – OBLIK PRIČVRŠČENJA – CONSTRUCTION TYPES

X – OSNOVNA – OSNOVNI – BASIC
 B – Z DRŠNO PUŠO – SA KLIZNOM ČAUROM – WITH PIVOT LUG
 G – Z ZGLOBNIM LEŽAJEM – SA ZGLOBNIM LEŽAJEM – WITH PIVOT LUG WITH SPHERICAL BEARING
 C – S PRIROBNICO SPREDAJ – SA PRIROBNICOM NA SPREDNJOJ STRANI – WITH FLANGE FRONT
 D – S PRIROBNICO ZADAJ – SA PRIROBNICOM NA ZADNJOJ STRANI – WITH FLANGE REAR
 E – S TEČAJEM – SA RUKAVCEM – WITH PIVOT
 PREMER BATA – PREČNIK KLIPA – PISTON DIAMETER

PREMER BATNICE – PREČNIK KLIPNJAČE – PISTON ROD DIAMETER

HOD CILINDRA – HOD CILINDRA – PISTON STROKE

NAVOJ (M) – NAVOJ (M) – COIL (M)

X – DODATNE ZAHTEVE – POSEBNI ZAHTJEVI – SPECIAL REQUESTS

GLAVE – GLAVE – PIVOT PLUG

GZ-2
GP-2

PRIMER ZA NAROČILO

ENOSTRANSKO DELUJOČI
 HIDRAVLICNI CILINDER VRSTE CE-16
 NAČIN PRITRDITVE CILINDRA:
 Z ZGLOBNIM LEŽAJEM
 PREMER BATNICE: $\varnothing 50$
 HOD CILINDRA: 300 mm
 PRIKLJUČEK: M 16 \times 1,5
 GLAVA: $\varnothing 30$

CE16-G-50-300-M 16 \times 1,5-0-GZ2-3

PRIMER ZA NARUČIVANJE

HIDRAULIČKI CILINDAR
 JEDNOSMERNOG DEJSTVA VRSTE CE-16
 NAČIN PRIČVRŠČENJA:
 SA ZGLOBNIM LEŽAJEM
 PREČNIK KLIPNJAČE: $\varnothing 50$
 HOD CILINDRA: 300 mm
 PRIKLJUČAK: M 16 \times 1,5
 GLAVA: $\varnothing 30$

ORDER SPECIFICATION

PLUNGER TYPE CYLINDERS SERIES
 CE-16
 CONSTRUCTION TYPE: WITH PIVOT
 LUG WITH SPHERICAL BEARING
 PISTON ROD DIAMETER: $\varnothing 50$
 PISTON STROKE: 300 mm
 COIL (M): M 16 \times 1,5
 PIVOT LUG: $\varnothing 30$

Cilindri vrste CE-16 predstavljajo moderno varjeno konstrukcijo enostransko delujočih hidrauličnih cilindrov za delovni tlak 160 bar. Odlikujejo jih majhne vgradne mere, zanesljivo tesnenje, enostavna zamenjava delov. Odzračevanje je zagotovljeno z odzračevalnim vijakom.

Cilindri oznake CE-16 predstavljajo moderno vareno konstrukcijo jednosmernih hidrauličnih cilindrov za radni pritisak 160 bar. Prednosti ove vrste su male ugradne mjere, pouzdano brtvljenje i jednostavna zamjena djelova. Odzračivanje je zagarantirano sa ventilom za odzračivanje.

Cylinder type CE-16 represent a modern welded construction of one-sided working hydraulic cylinders for the working pressure 160 bar. They excel through small built-in measures reliable sealing, simple changing of parts. Airing is assured by the airing screw.